

# ASAP2008 V2R1

## 官方下载版 运行与使用记录

[225505@163.COM](mailto:225505@163.COM)

QQ\_499362006

ASAP2008模块:

4个主要模块:

ASAP Lite 模块

ASAP CAD+ 模块

ASAP OPTICAL+ 模块

ASAP ADVANCED 模块

3个附加模块（可选）:

BIO 模块

ELTM 模块

CATIA 模块

[225505@163.COM](mailto:225505@163.COM)

QQ\_499362006

## ASAP2008 V2R1 新增加的功能:

### 1、用户自定义补偿函数可用于优化功能:

Penalty Functions - Building upon new optimization methods available in ASAP, user-defined penalty functions have been added to help guide optimization routines toward ideal solutions.

### 2、加强偏振光分析功能:

Polarization Enhancements- Realistic Retarder Models have been added to complement Realistic Polarizer Models, and FRESNEL TIR is now compatible with the new polarization models.

### 3、庞加莱球视图功能增强:

Poincaré Sphere Enhancements - Clicking on multiple points within the Poincaré Sphere Visualization Tool now highlights the points for improved visibility, and interrogation of polarization states.

### 4、粗糙模型和散射模型增加:

Roughness and Scatter Models - The ASAP Quick Start Toolbar now includes a larger set of roughness and scatter models that are grouped by manufacturer where appropriate. Users may drag-and-drop these models into their systems.

### 5、加强IGES导入功能:

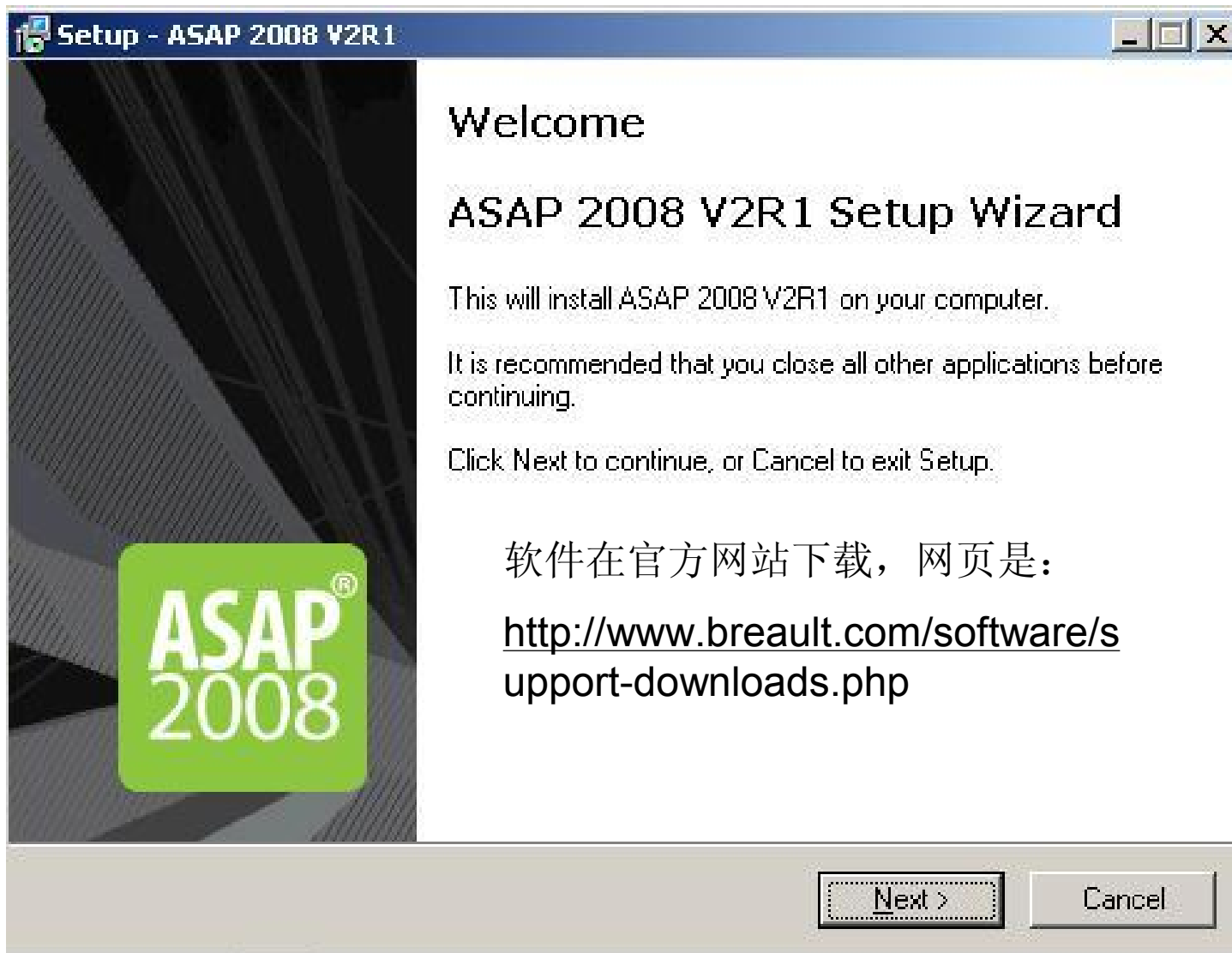
IGES Import Enhancements - ASAP will now automatically detect and interactively manage duplicate geometry during the IGES import process, and an even wider range of CAD geometries may be imported.

### 6、3D视图功能增强:

3D Viewer Enhancements - Large systems may now be displayed up to twice as fast. These and other features enable ASAP users in 35 countries to model and analyze the finest details of optical systems, which means users can depend on their simulations to mirror real-world performance. ASAP analyses validate designs and support smooth transitions to manufacturing.

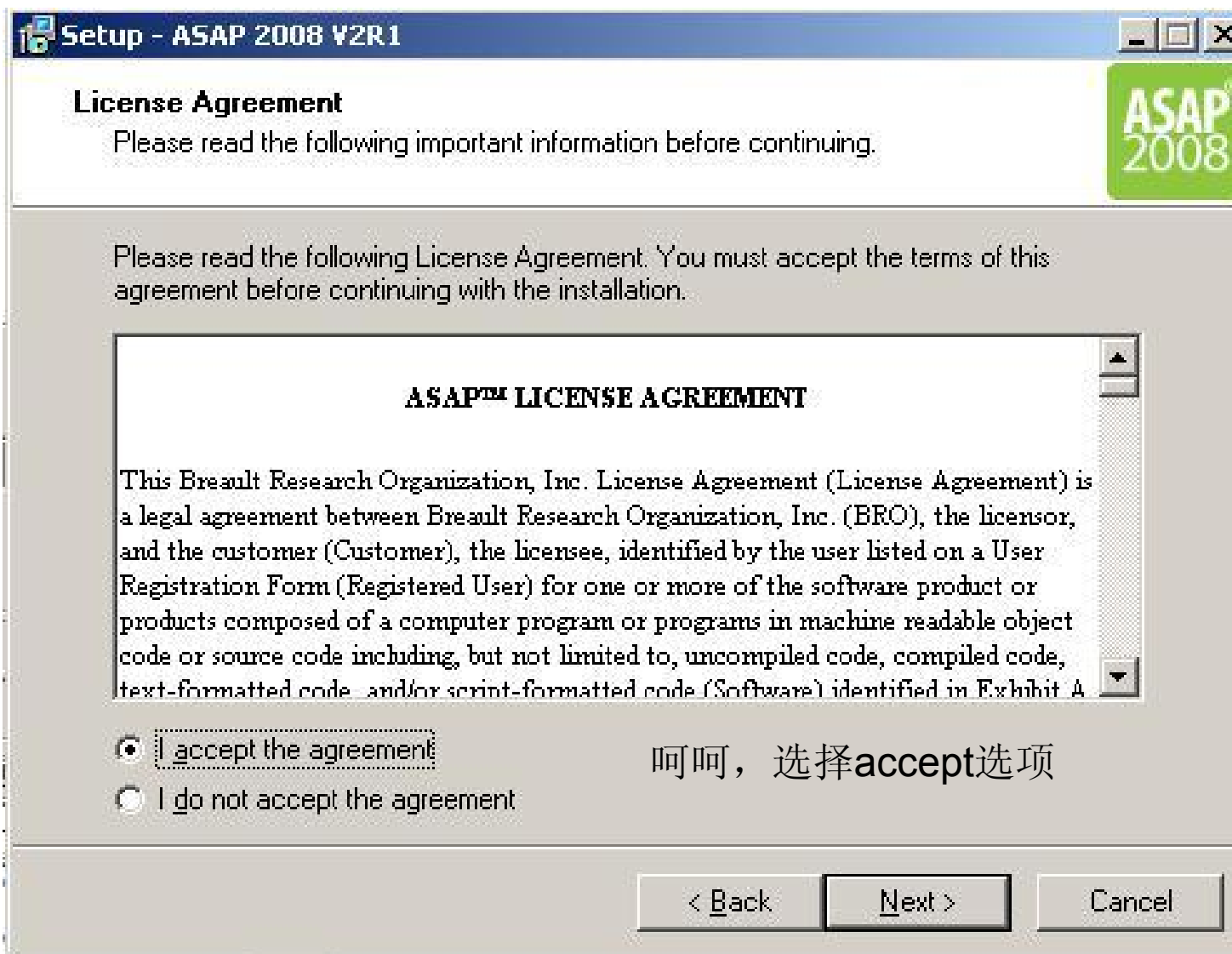
[225505@163.COM](mailto:225505@163.COM)

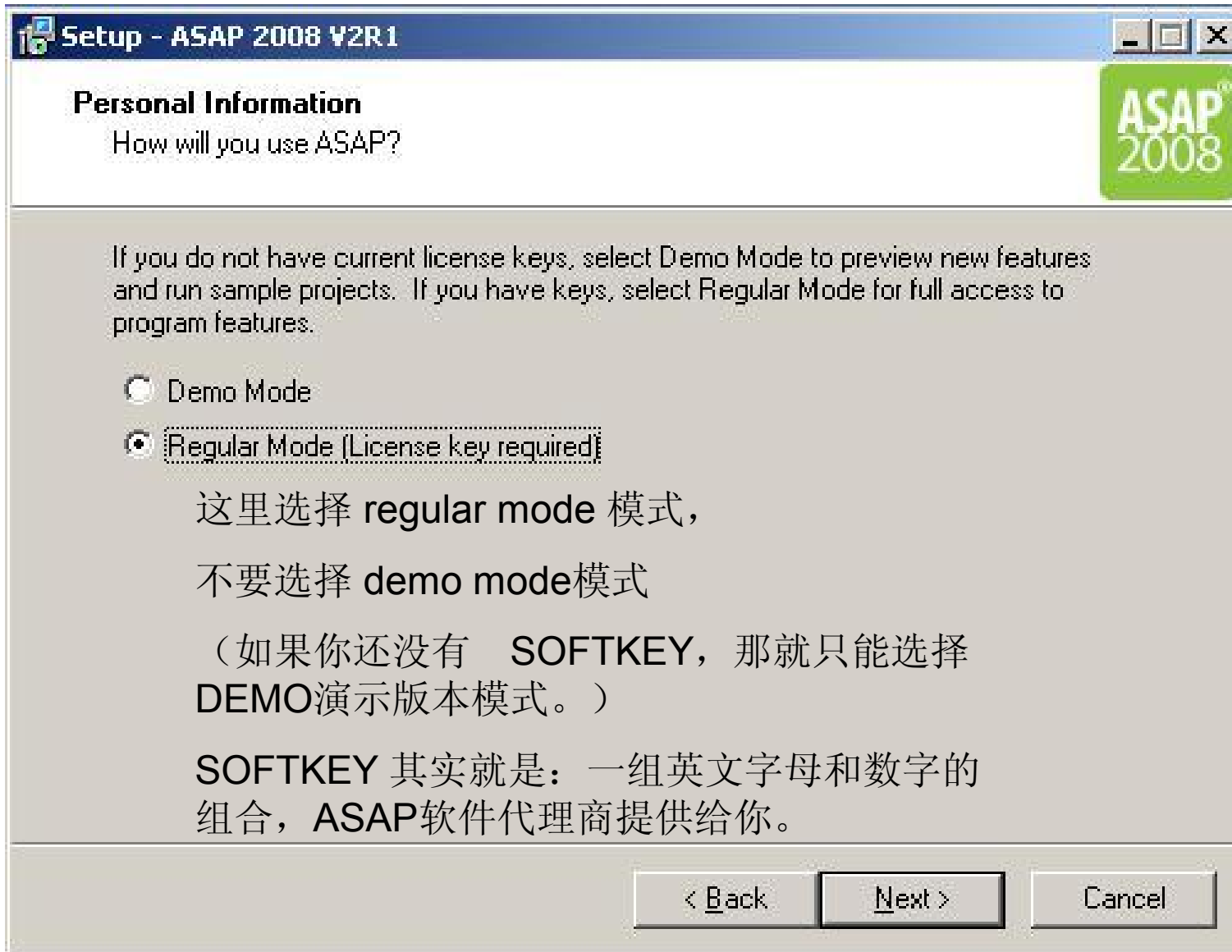
QQ\_499362006



[225505@163.COM](mailto:225505@163.COM)

QQ\_499362006





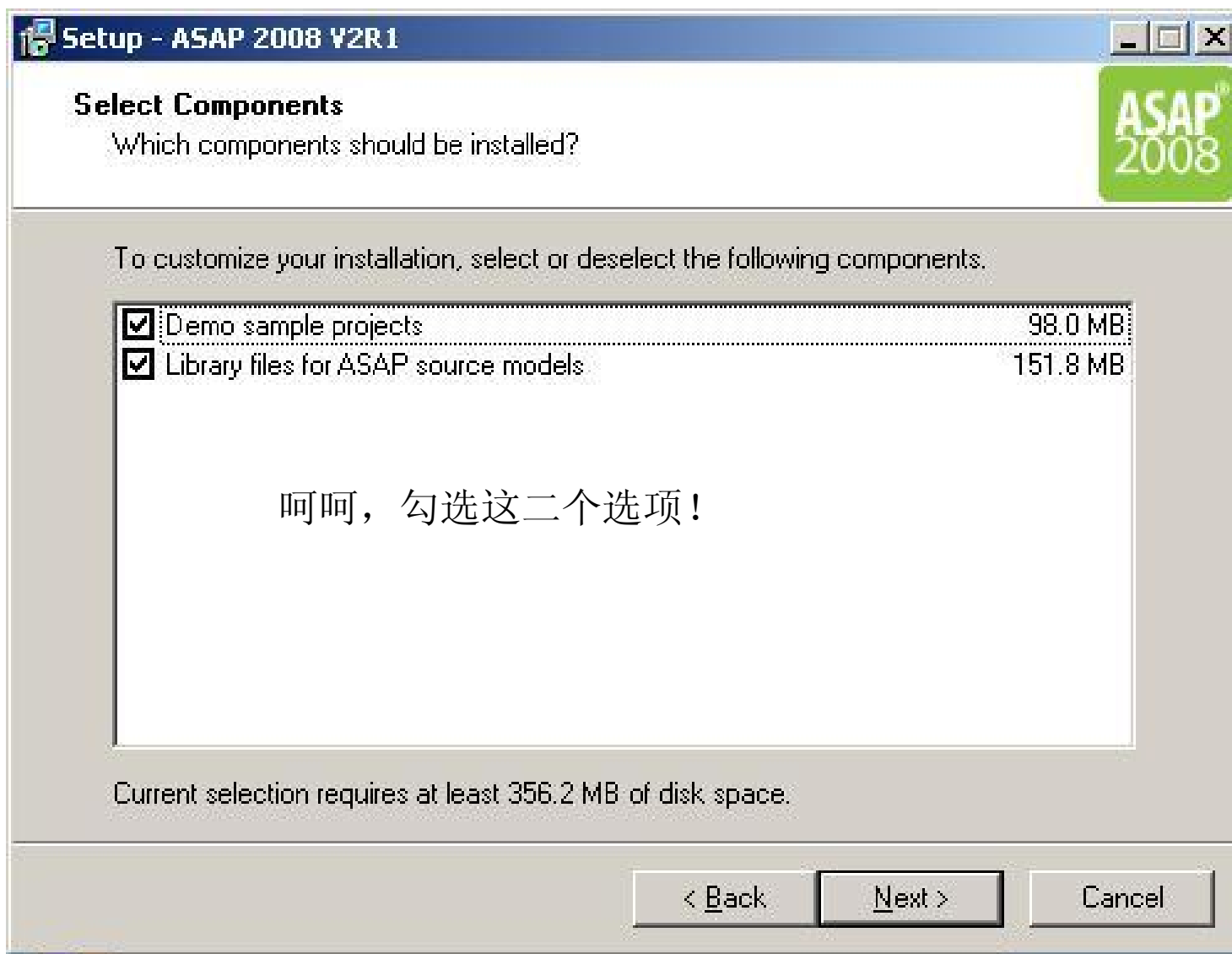
225505@163.COM

QQ\_499362006



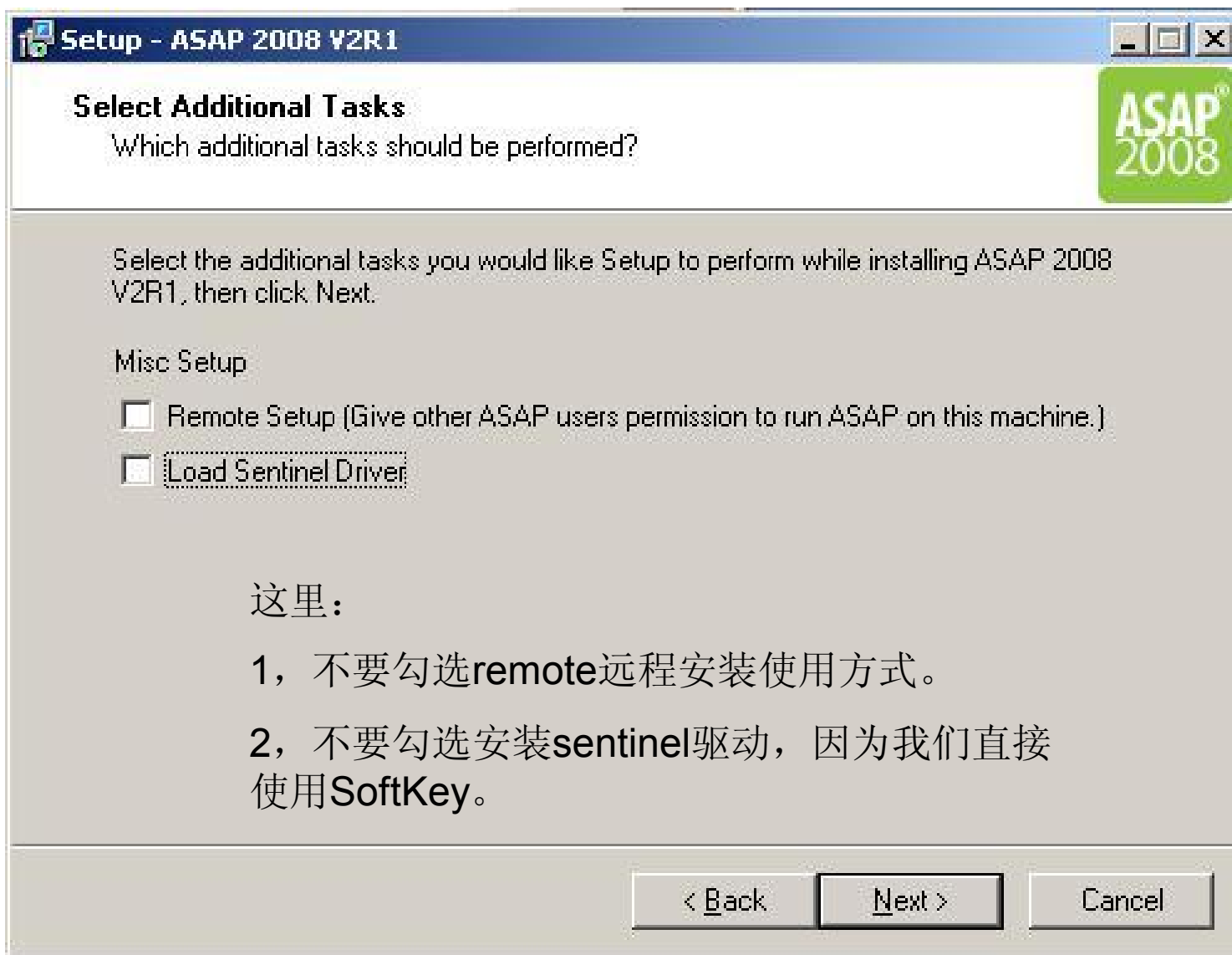
225505@163.COM

QQ\_499362006



225505@163.COM

QQ\_499362006



225505@163.COM

QQ\_499362006



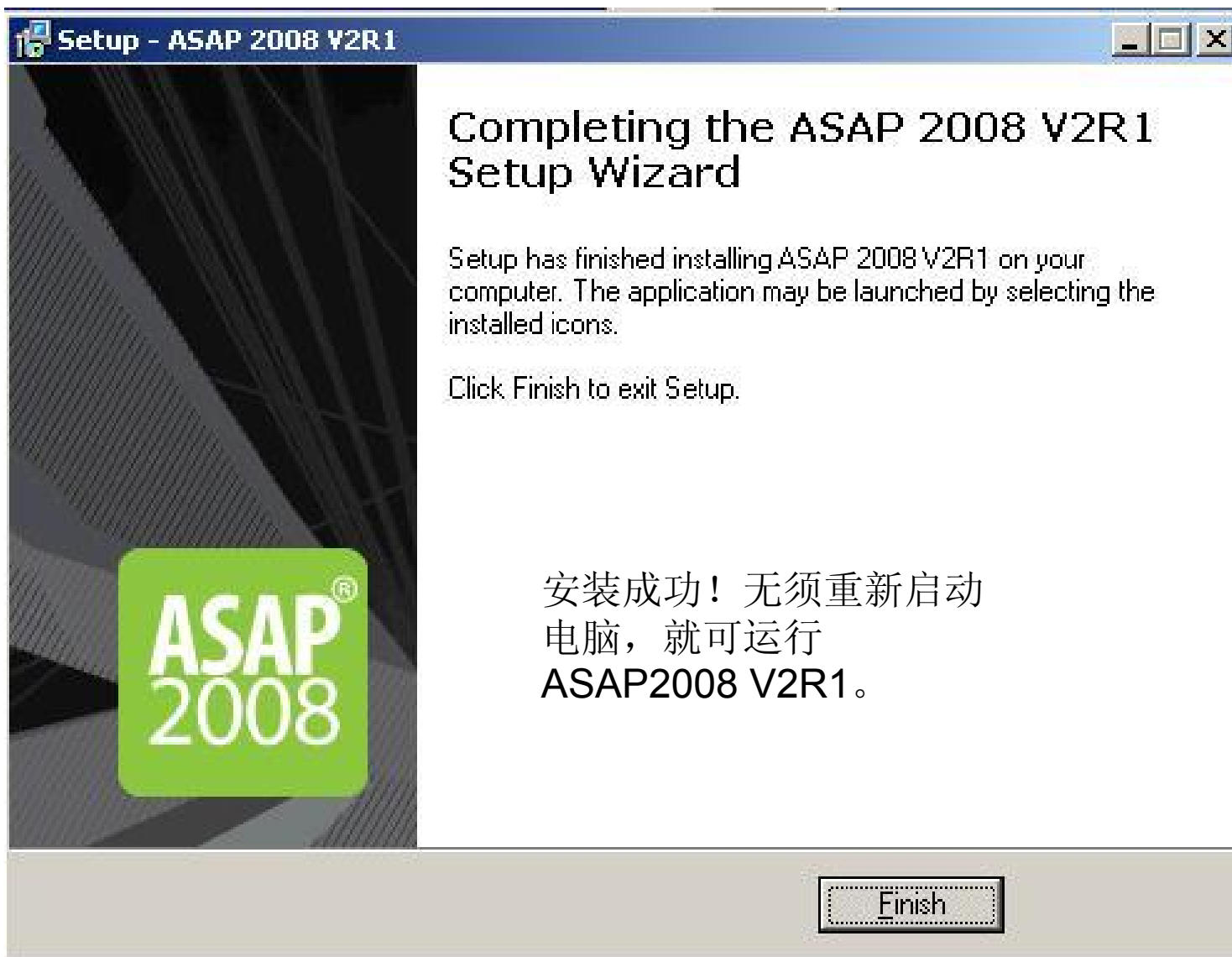
225505@163.COM

QQ\_499362006



[225505@163.COM](mailto:225505@163.COM)

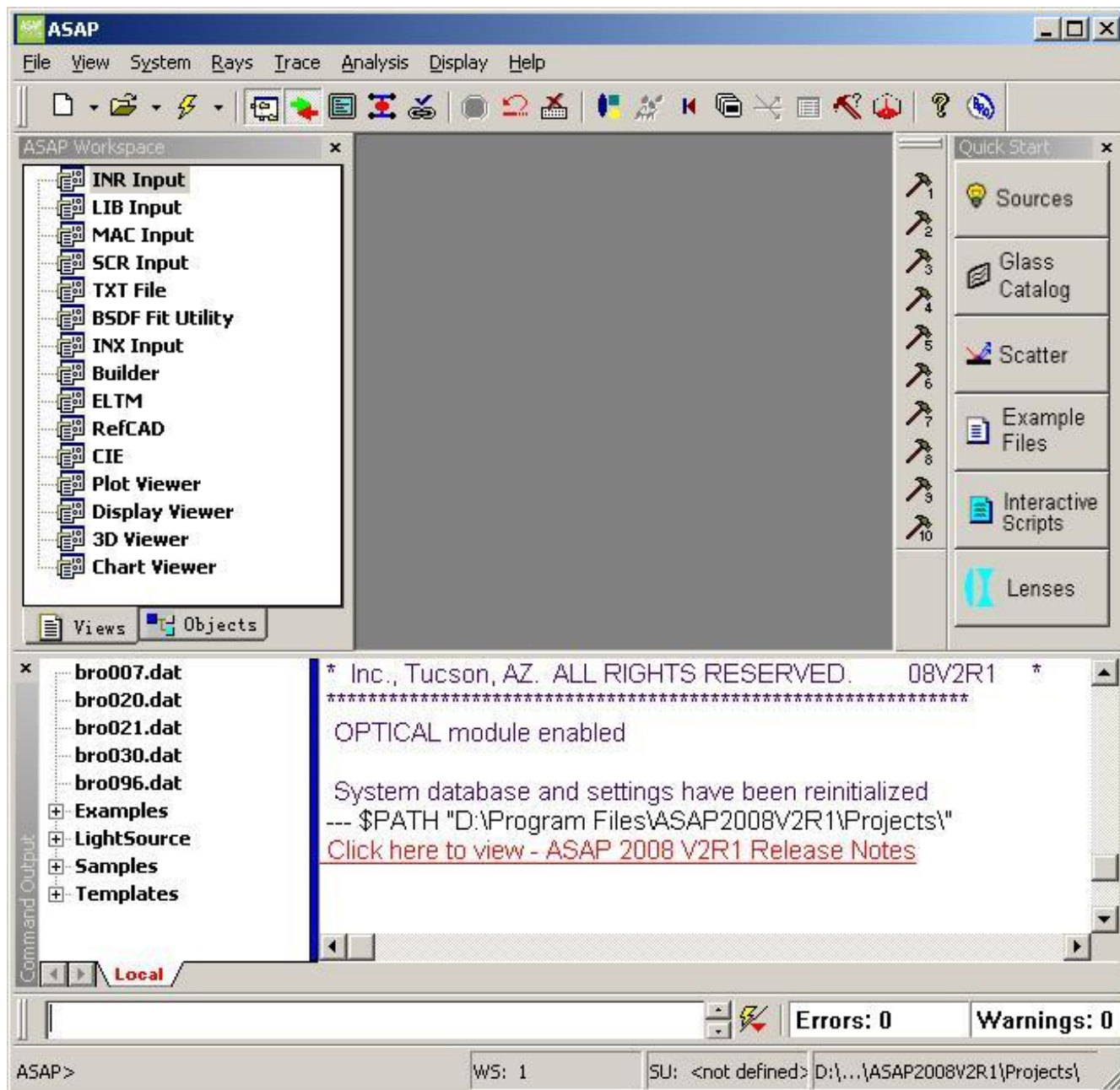
QQ\_499362006



安装成功！无须重新启动  
电脑，就可运行  
ASAP2008 V2R1。

[225505@163.COM](mailto:225505@163.COM)

QQ\_499362006



这里是进入后的界面。可以看看新增功能！

ASAP 2008 V2R1 Release Notes            Build: 080802.1            Build Date: August 2, 2008  
(c) 1982-2008 Breault Research Organization, Inc. All rights reserved.

Scatter Models:

06PRD00002051            Roughness models have been combined with scatter models in the Quick Start Toolbar, and models are grouped by manufacturer where appropriate.

Miscellaneous Improvements:

06PRD00001629            Improved: The 3D Viewer is now faster, up to twice as fast on some large models.

06PRD00001889            Improved: Some Online Help Topics accidentally omitted in ASAP 2008 V1R1 were restored.

06PRD00001960            Improved: The robustness of IGES import is enhanced.

06PRD00001962            New: A feature to automatically detect and interactively manage duplicate geometry during IGES import is introduced.

06PRD00002072            Improved: ASAP now attempts to heal a specific common ambiguity related to spherical and cylindrical surfaces in CATIA. This improvement allows the successful import of some CATIA geometries which previously produced unexpected results.

[225505@163.COM](mailto:225505@163.COM)

QQ\_499362006

## Optimization:

06PRD00001856      New: Penalty Function capability has been added to guide optimization toward feasible solutions.

06PRD00002049      Fixed: ASAP Optimization accepts scientific notation with an explicitly positive exponent.

## Polarization

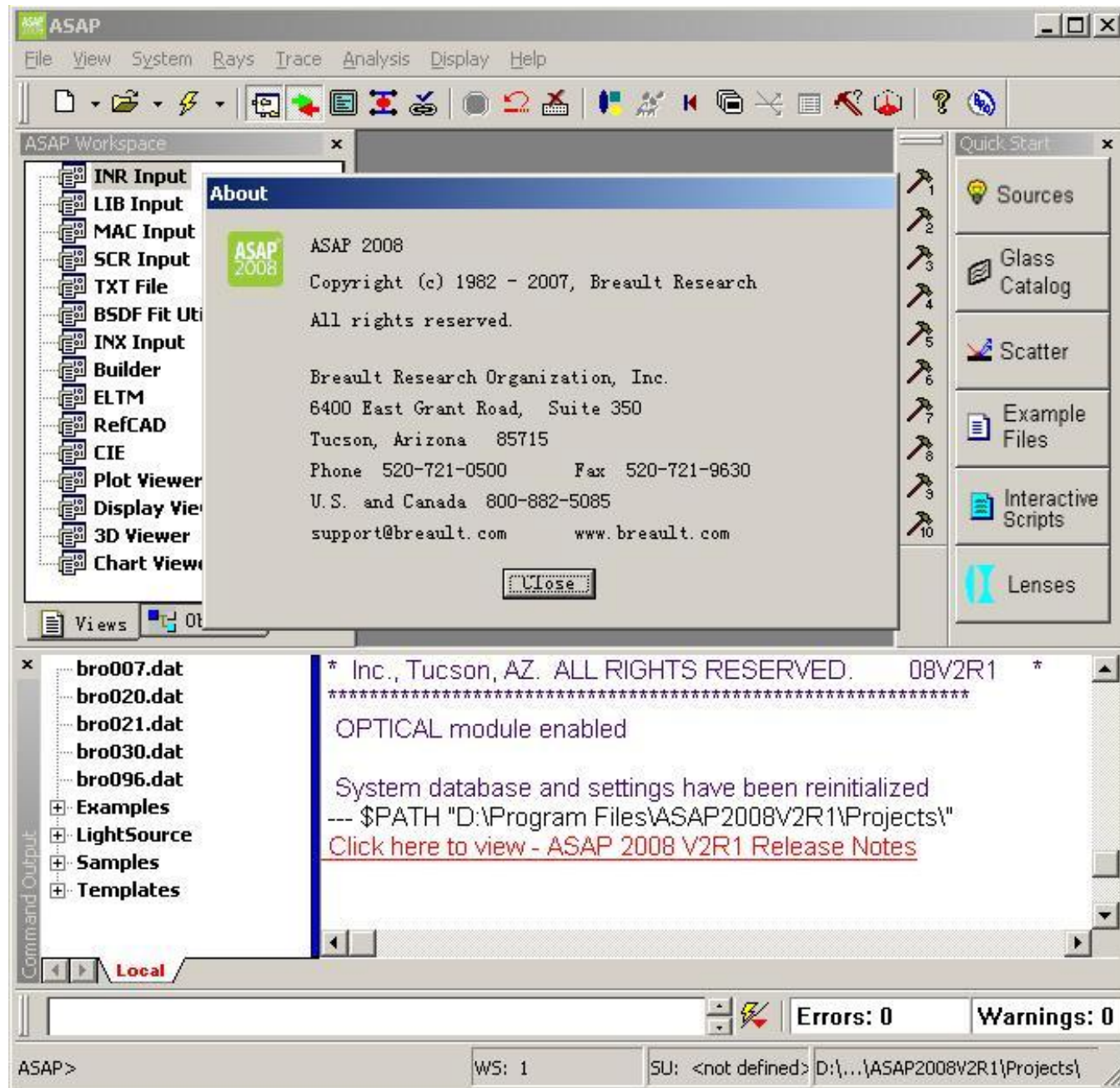
06PRD00001594      New: Realistic Retarder models complement Realistic Polarizer models to enable high-fidelity polarization designs.

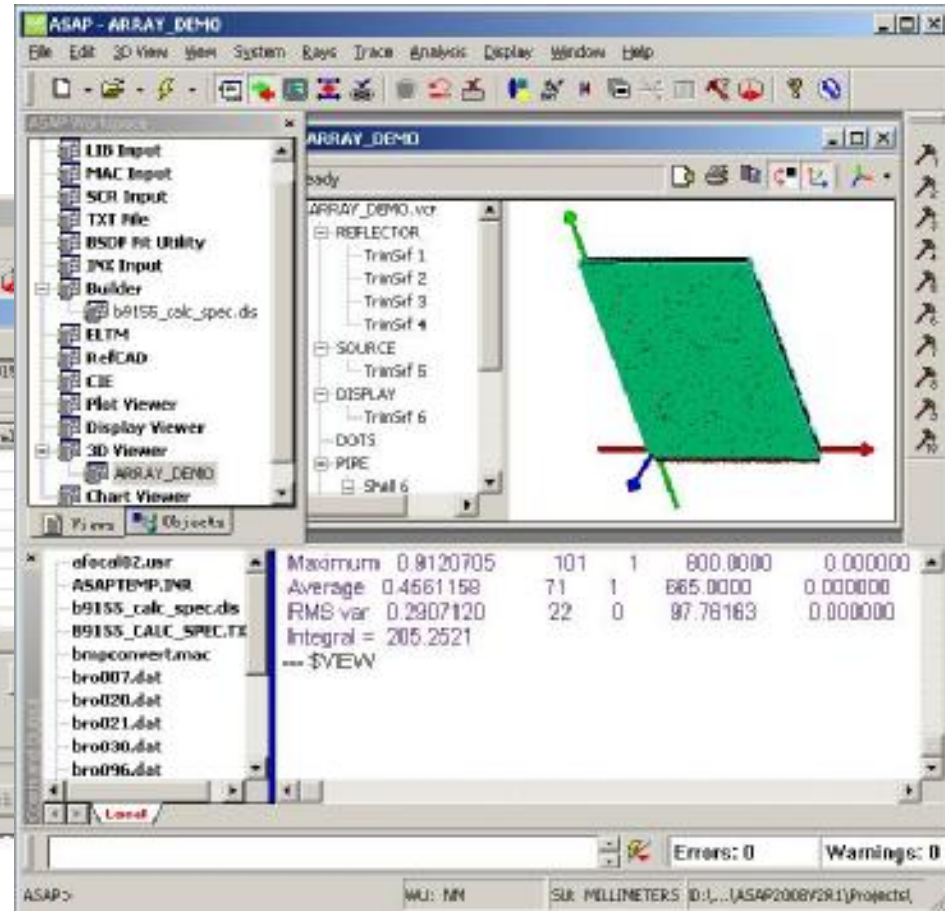
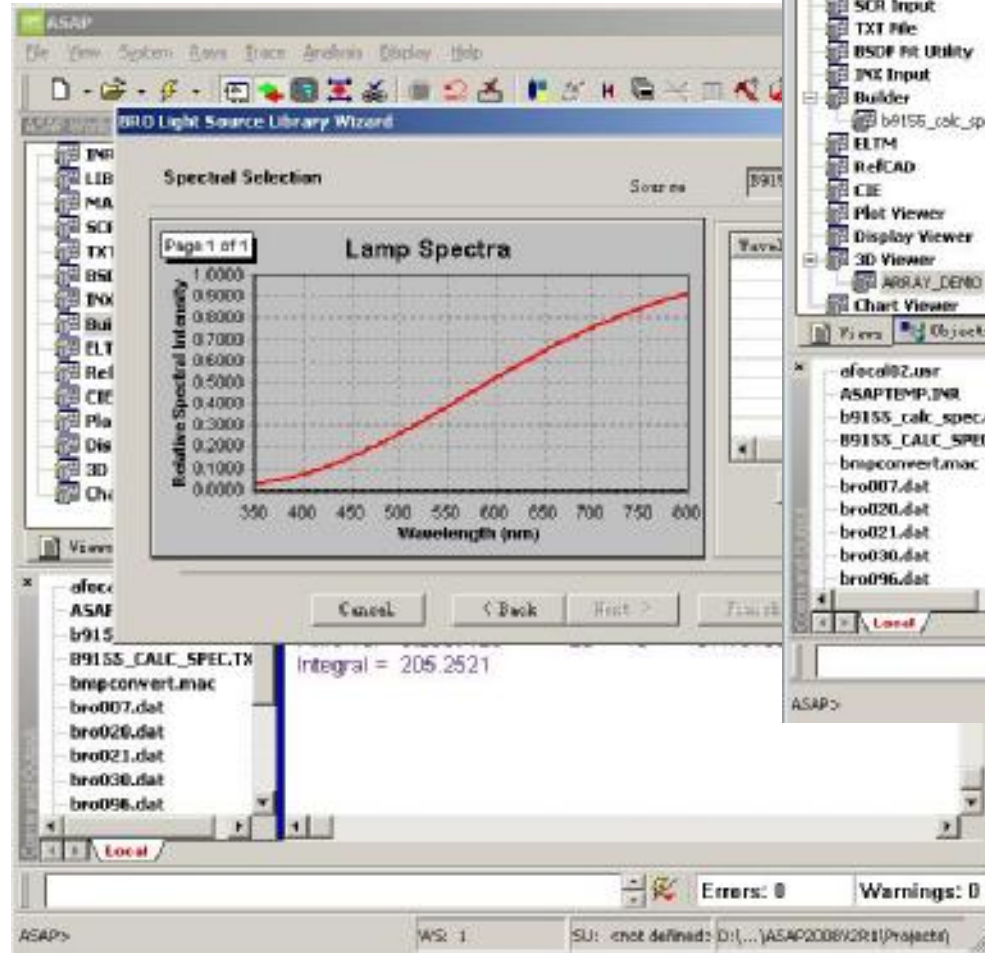
06PRD00001610      Improved: The consistency of FRESNEL TIR with the new polarization models has been improved.

06PRD00001800      Improved: Clicking on multiple points within 3D Viewer now highlights the points for improved visibility.

[225505@163.COM](mailto:225505@163.COM)

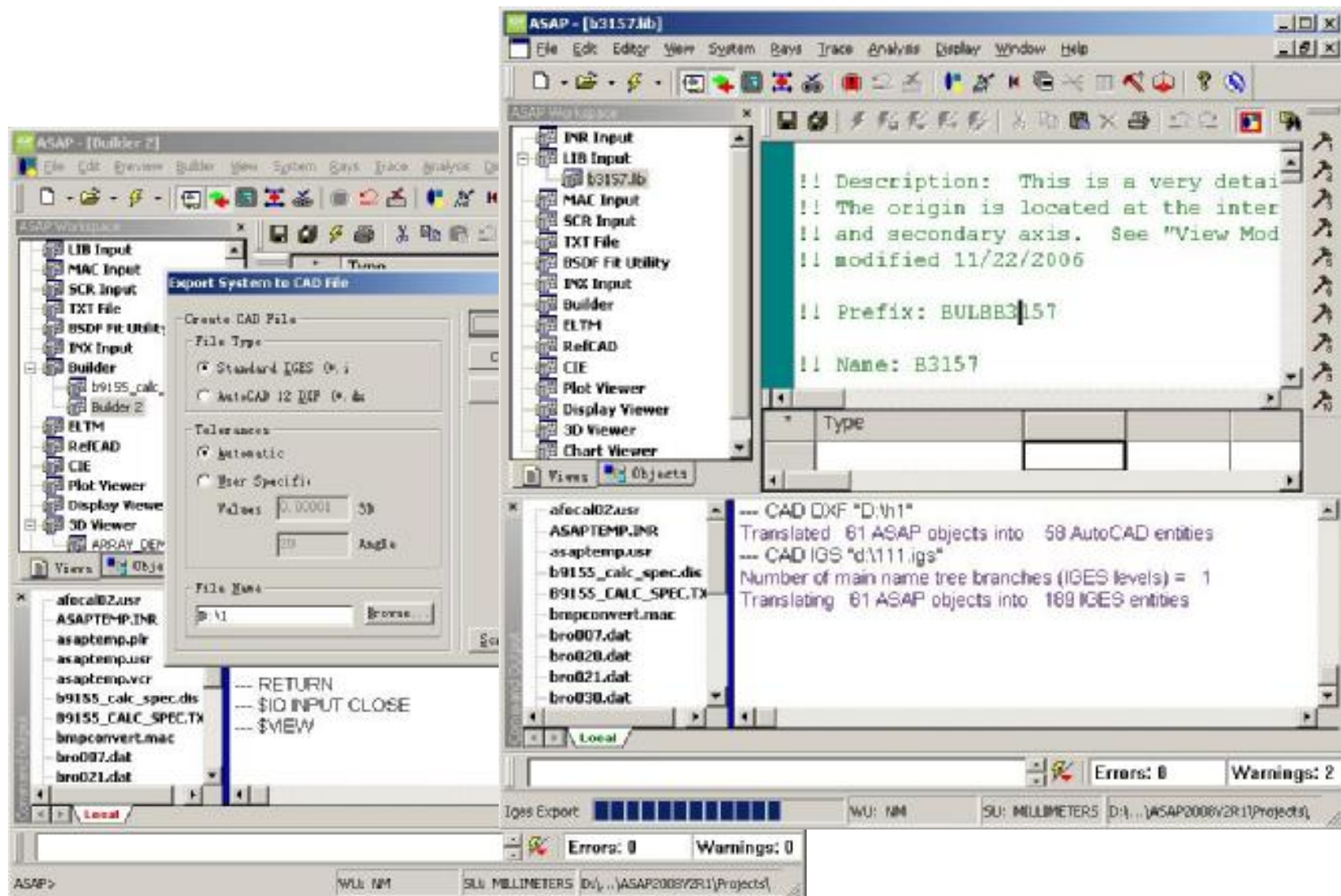
QQ\_499362006





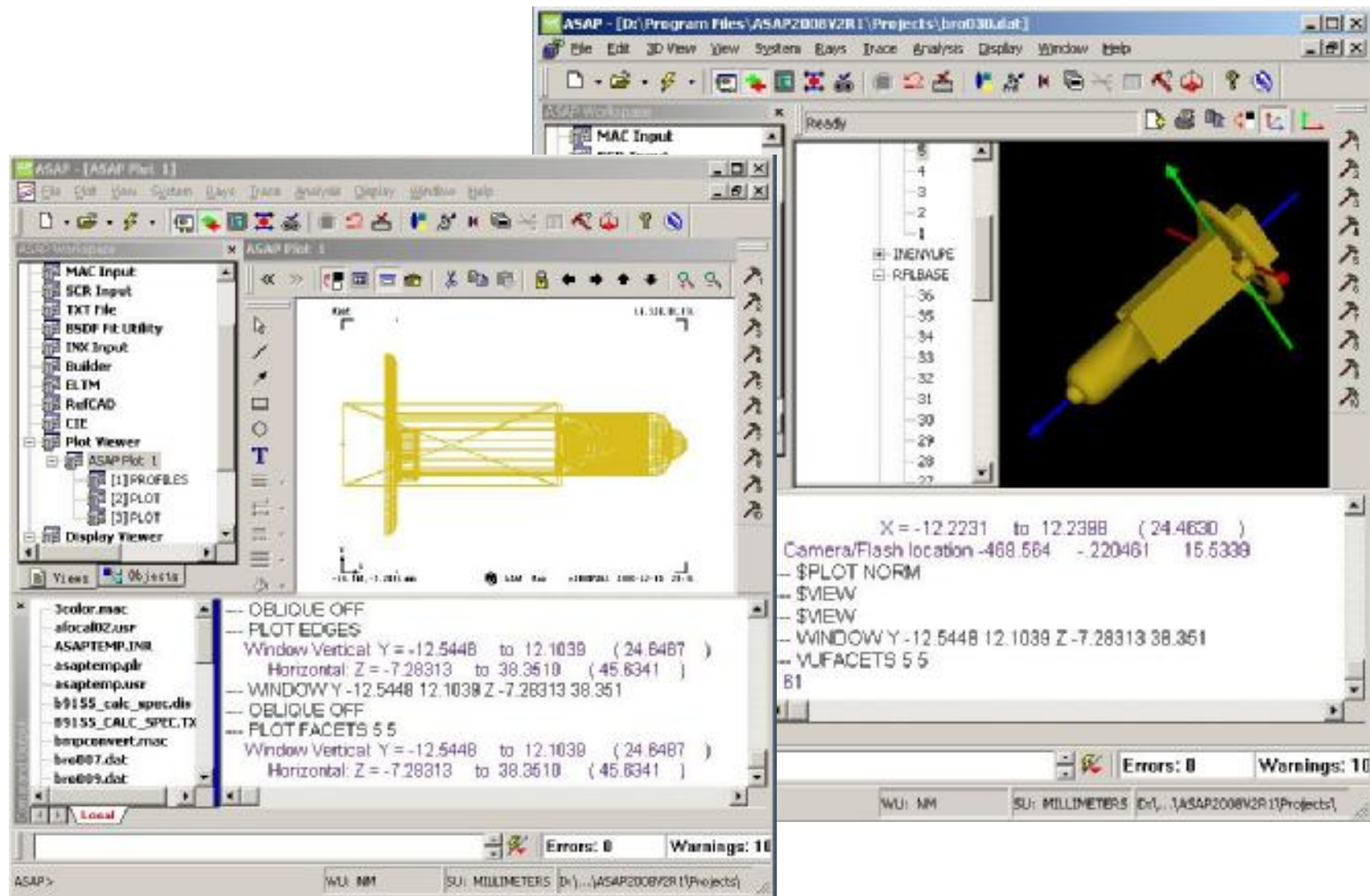
225505@163.COM

QQ\_499362006



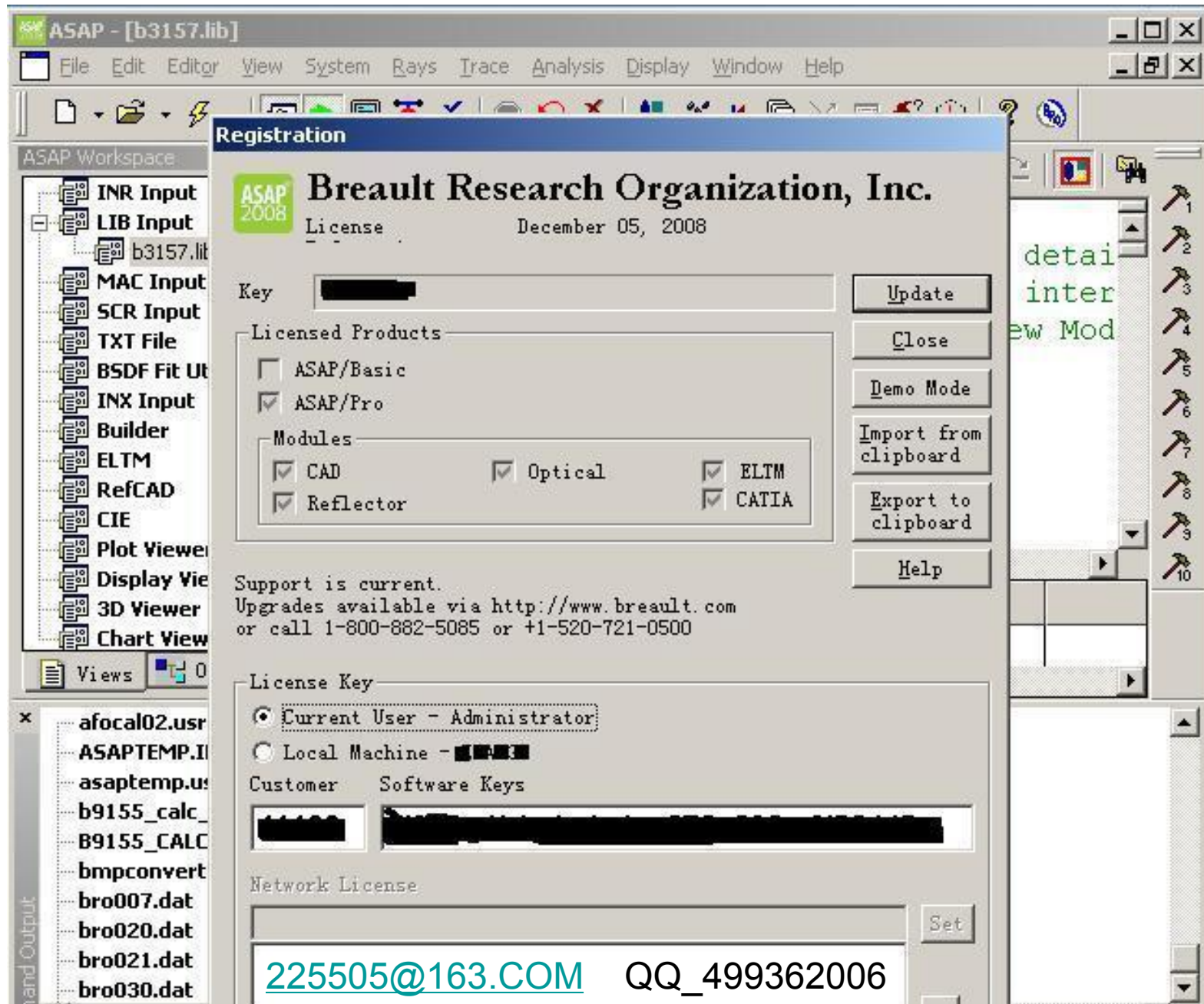
225505@163.COM

QQ\_499362006



225505@163.COM

QQ\_499362006



The logo consists of the text "ASAP" in a bold, sans-serif font with a registered trademark symbol (®) to its upper right, and "2008" in a similar font directly below it. The text is white and is contained within a light green rounded square.

**ASAP<sup>®</sup>**  
**2008**

The text "Version 2, Release 1" is white and is positioned on a horizontal light green bar that spans across the middle of the page.

Version 2, Release 1

©2008 Breault Research Organization, Inc.